

Corners to be Indexed

E1/4 28-107-41 N1/4 28-107-41
W1/4 28-107-41
E1/4 29-107-41
NW 28-107-41
NE 29-107-41

FEB 14 2023

Karen Brown

I hereby certify that this document and the data contained herein was prepared by me or under my direct supervision.

Daniel L. Bueltel

10/21/2022

Daniel L. Bueltel

Date

License No. 43844

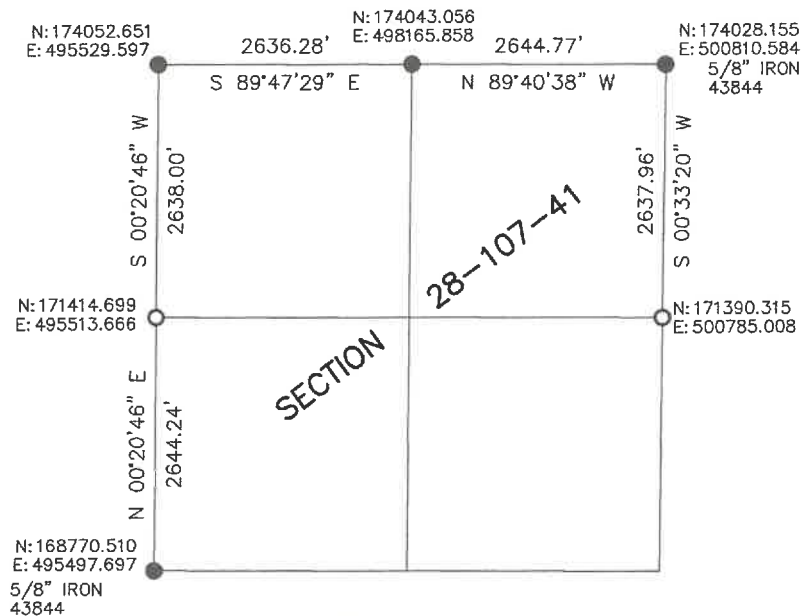
CERTIFICATE OF LOCATION OF GOVERNMENT CORNER

Land survey monuments situated in Section 28, Township 107, Range 41, 5TH P.M.

STATE OF MINNESOTA, County of MURRAY



- FOUND MONUMENT
- SET MONUMENT



Statement of Evidence

E1/4 28-107-41

On August 25, 1905 J.W. Woolstencraft established the corner 2640 feet south of the northeast corner of the section.

On October 11, 2022 Bueltel-Moseng Land Surveying found iron with LS #51727 per corner certificate dated December 27, 2017. After further investigation I determined that the corner post to the south fit the recorded distance better, as well as the occupation lines to the west.

W1/4 28-107-41 (E1/4 29-107-41)

On August 25, 1905 J.W. Woolstencraft established the corner midway and online between section corners.

On October 11, 2022 Bueltel-Moseng Land Surveying set a 5/8" iron with seal #43844 on line between the section corners and in line with fence to the East. Midway per 1905 survey would end up 3 feet south of fence. Recorded distance from the Northeast Corner is 2638', which lines up with fence to the East.

NW 28-107-41 (NE 29-107-41)

On August 25, 1905 J.W. Woolstencraft found government corner.

In 1940 county records show a concrete monument.

On October 6, 2022 Bueltel-Moseng Land Surveying dug by hand in the center of the intersecting gravel roads and found a 6" concrete monument 2 feet below the surface of the road. Accepted the monument and set a 5/8" iron with seal #43844 over top of the monument.

N1/4 28-107-41

On August 25, 1905 J.W. Woolstencraft found government corner.

In 1940 county records show a concrete monument.

On October 10, 2022 Bueltel-Moseng Land Surveying found a capped 5/8" iron. It was determined that the surveyor did not look for the original concrete monument. We then dug with a backhoe and found the original 6" concrete monument 4" below the road surface. We set 5/8" iron with seal #43844 along the north side of the concrete monument for locating purposes. The concrete monument is 0.9' northeast of the found capped iron.